

REVISIONS		
DATE	L.S. NAME	LIC. NO.
4/10/23	HOWARD A. TRANSUE	GS 33541

SHEET 28

SHEET 17

BLOCK 6422.7' TOTAL LIMIT

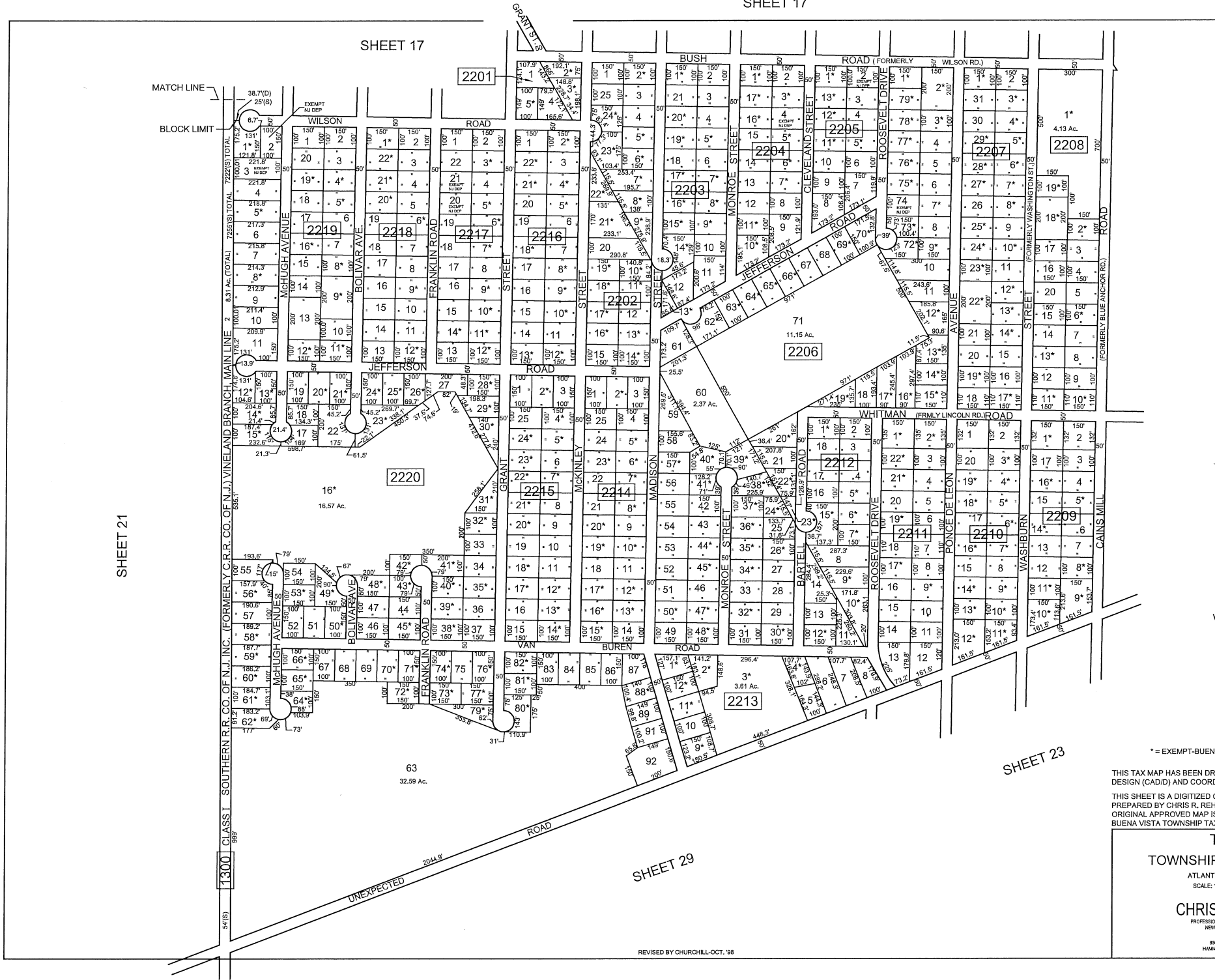
THIS TAX MAP HAS BEEN DRAWN USING COMPUTER AIDED DRAFTING/ DESIGN (CAD/D) AND COORDINATE GEOMETRY (COGO)

THIS SHEET IS A DIGITIZED COPY OF THE TAX MAP ORIGINALLY PREPARED BY CHRIS R. REHMANN DATED JANUARY 1989. THE ORIGINAL APPROVED MAP IS ON FILE IN THE OFFICE OF THE BUENA VISTA TOWNSHIP TAX ASSESSOR.

TAX MAP
TOWNSHIP OF BUENA VISTA
 ATLANTIC COUNTY, NEW JERSEY
 SCALE: 1" = 200' DATE: JANUARY 1989
CHRIS R. REHMANN
 PROFESSIONAL ENGINEER & LAND SURVEYOR
 NEW JERSEY LICENSE NO. 17119
 836 SO. WHITE HORSE PIKE
 HAMMONTON, NEW JERSEY 08037

REVISED BY CHURCHILL - OCT. 98

SHEET 22



REVISIONS		
DATE	L.S. NAME	LIC. NO.

* = EXEMPT-BUENA VISTA TOWNSHIP

THIS TAX MAP HAS BEEN DRAWN USING COMPUTER AIDED DRAFTING/ DESIGN (CAD/D) AND COORDINATE GEOMETRY (COGO)

THIS SHEET IS A DIGITIZED COPY OF THE TAX MAP ORIGINALLY PREPARED BY CHRIS R. REHMANN DATED JANUARY 1989. THE ORIGINAL APPROVED MAP IS ON FILE IN THE OFFICE OF THE BUENA VISTA TOWNSHIP TAX ASSESSOR.

TAX MAP
TOWNSHIP OF BUENA VISTA
 ATLANTIC COUNTY, NEW JERSEY
 SCALE: 1" = 200' DATE: JANUARY 1989

CHRIS R. REHMANN
 PROFESSIONAL ENGINEER & LAND SURVEYOR
 NEW JERSEY LICENSE NO. 17119

850 SO. WHITE HORSE PIKE
 HANMANTON, NEW JERSEY 08037

SHEET 24

SHEET 30

SHEET 31



* = EXEMPT-BUENA VISTA TOWNSHIP

THIS TAX MAP HAS BEEN DRAWN USING COMPUTER AIDED DRAFTING/ DESIGN (CAD/D) AND COORDINATE GEOMETRY (COGO)

THIS SHEET IS A DIGITIZED COPY OF THE TAX MAP ORIGINALLY PREPARED BY CHRIS R. REHMANN DATED JANUARY 1989. THE ORIGINAL APPROVED MAP IS ON FILE IN THE OFFICE OF THE BUENA VISTA TOWNSHIP TAX ASSESSOR.

REVISIONS		
DATE	L.S. NAME	LIC. NO.

TAX MAP
TOWNSHIP OF BUENA VISTA

ATLANTIC COUNTY, NEW JERSEY
SCALE: 1" = 200' DATE: JANUARY 1989

CHRIS R. REHMANN

PROFESSIONAL ENGINEER & LAND SURVEYOR
NEW JERSEY LICENSE NO. 17119

835 SO. WHITE HORSE PIKE
HAMMONTON, NEW JERSEY 08037

REVISIONS		
DATE	L.S. NAME	LIC. NO.
1/15/09	HOWARD A. TRANSEU	GS 33451

SHEET 18

SHEET 19

SHEET 18

SHEET 25

SHEET 30

*ALL LOTS WHICH DO NOT HAVE DEED DIMENSIONS SHOWN
WERE SCALED DURING TAX MAP PREPARATION IN 1989*

* = EXEMPT-BUENA VISTA TOWNSHIP

THIS TAX MAP HAS BEEN DRAWN USING COMPUTER AIDED DRAFTING/
DESIGN (CAD/D) AND COORDINATE GEOMETRY (COGO)

THIS SHEET IS A DIGITIZED COPY OF THE TAX MAP ORIGINALLY
PREPARED BY CHRIS R. REHMANN DATED JANUARY 1989. THE
ORIGINAL APPROVED MAP IS ON FILE IN THE OFFICE OF THE
BUENA VISTA TOWNSHIP TAX ASSESSOR.

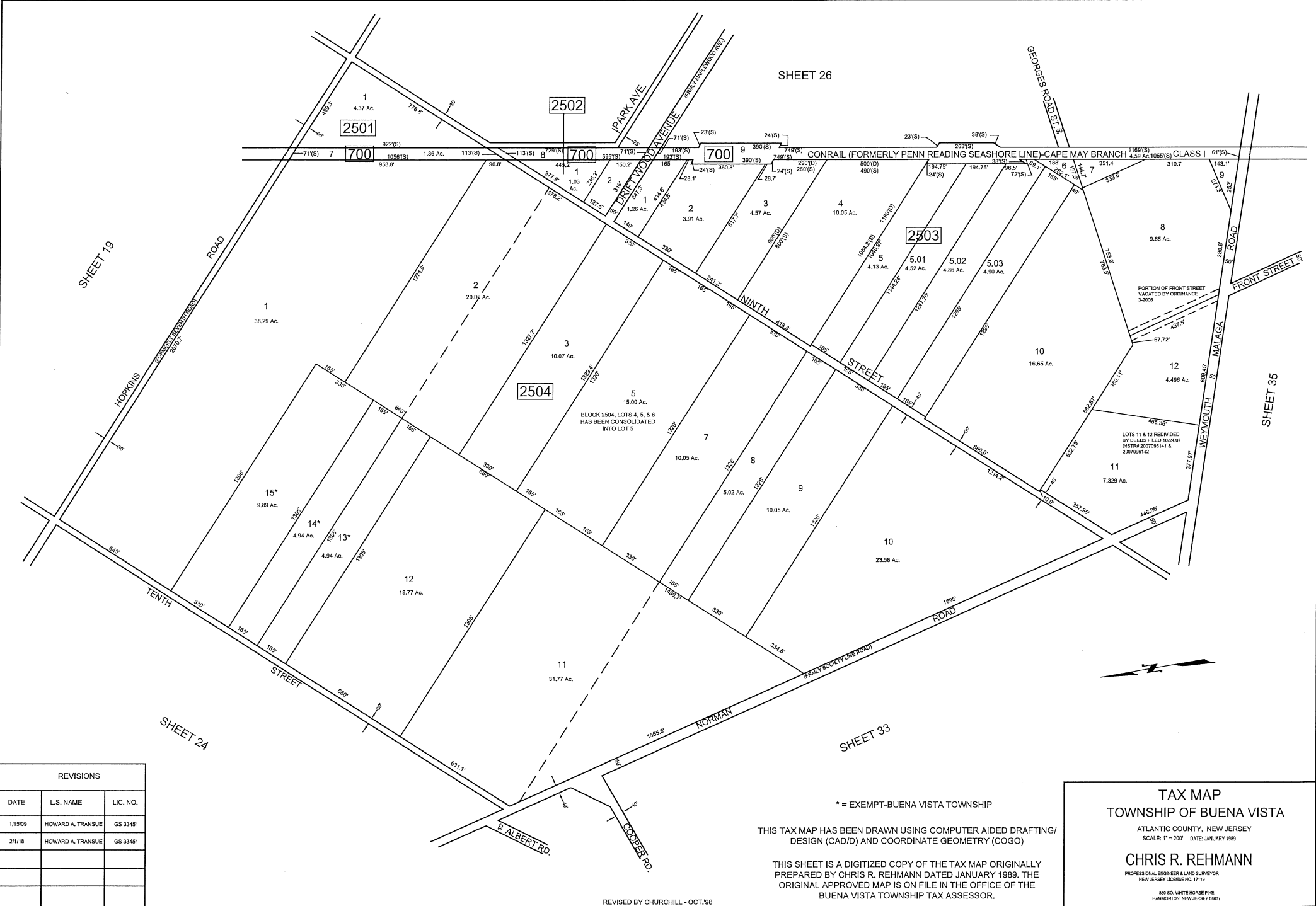
TAX MAP
TOWNSHIP OF BUENA VISTA

ATLANTIC COUNTY, NEW JERSEY
SCALE: 1" = 200' DATE: JANUARY 1989

CHRIS R. REHMANN

PROFESSIONAL ENGINEER & LAND SURVEYOR
NEW JERSEY LICENSE NO. 17119

610 WHITE HORSE PINE
HAMMONTON, NEW JERSEY 08037

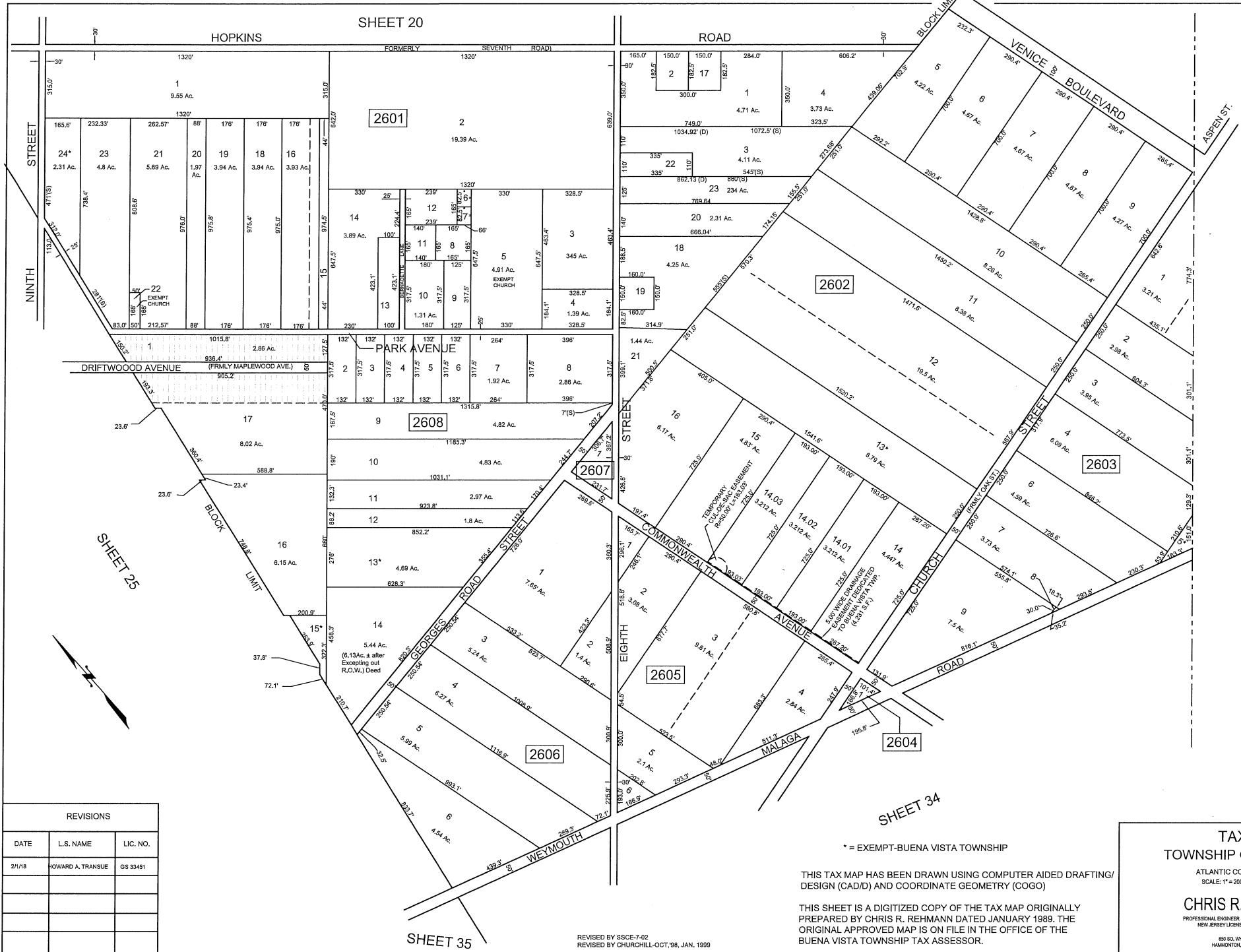


REVISIONS		
DATE	L.S. NAME	LIC. NO.
1/15/09	HOWARD A. TRANSLUE	GS 33451
2/1/18	HOWARD A. TRANSLUE	GS 33451

REVISED BY CHURCHILL - OCT.'98
REV. SSCCE 11-00

* = EXEMPT-BUENA VISTA TOWNSHIP
 THIS TAX MAP HAS BEEN DRAWN USING COMPUTER AIDED DRAFTING/
 DESIGN (CAD/D) AND COORDINATE GEOMETRY (COGO)
 THIS SHEET IS A DIGITIZED COPY OF THE TAX MAP ORIGINALLY
 PREPARED BY CHRIS R. REHMANN DATED JANUARY 1989. THE
 ORIGINAL APPROVED MAP IS ON FILE IN THE OFFICE OF THE
 BUENA VISTA TOWNSHIP TAX ASSESSOR.

TAX MAP
TOWNSHIP OF BUENA VISTA
 ATLANTIC COUNTY, NEW JERSEY
 SCALE: 1" = 200' DATE: JANUARY 1989
CHRIS R. REHMANN
 PROFESSIONAL ENGINEER & LAND SURVEYOR
 NEW JERSEY LICENSE NO. 17118
 825 SO. WHITE HORSE Pkwy.
 HAMMONTON, NEW JERSEY 08037



REVISIONS		
DATE	L.S. NAME	LIC. NO.
2/1/78	HOWARD A. TRANSUE	GS 33451

* = EXEMPT-BUENA VISTA TOWNSHIP

THIS TAX MAP HAS BEEN DRAWN USING COMPUTER AIDED DRAFTING/ DESIGN (CAD/D) AND COORDINATE GEOMETRY (COGO)

THIS SHEET IS A DIGITIZED COPY OF THE TAX MAP ORIGINALLY PREPARED BY CHRIS R. REHMANN DATED JANUARY 1989. THE ORIGINAL APPROVED MAP IS ON FILE IN THE OFFICE OF THE BUENA VISTA TOWNSHIP TAX ASSESSOR.

TAX MAP
TOWNSHIP OF BUENA VISTA

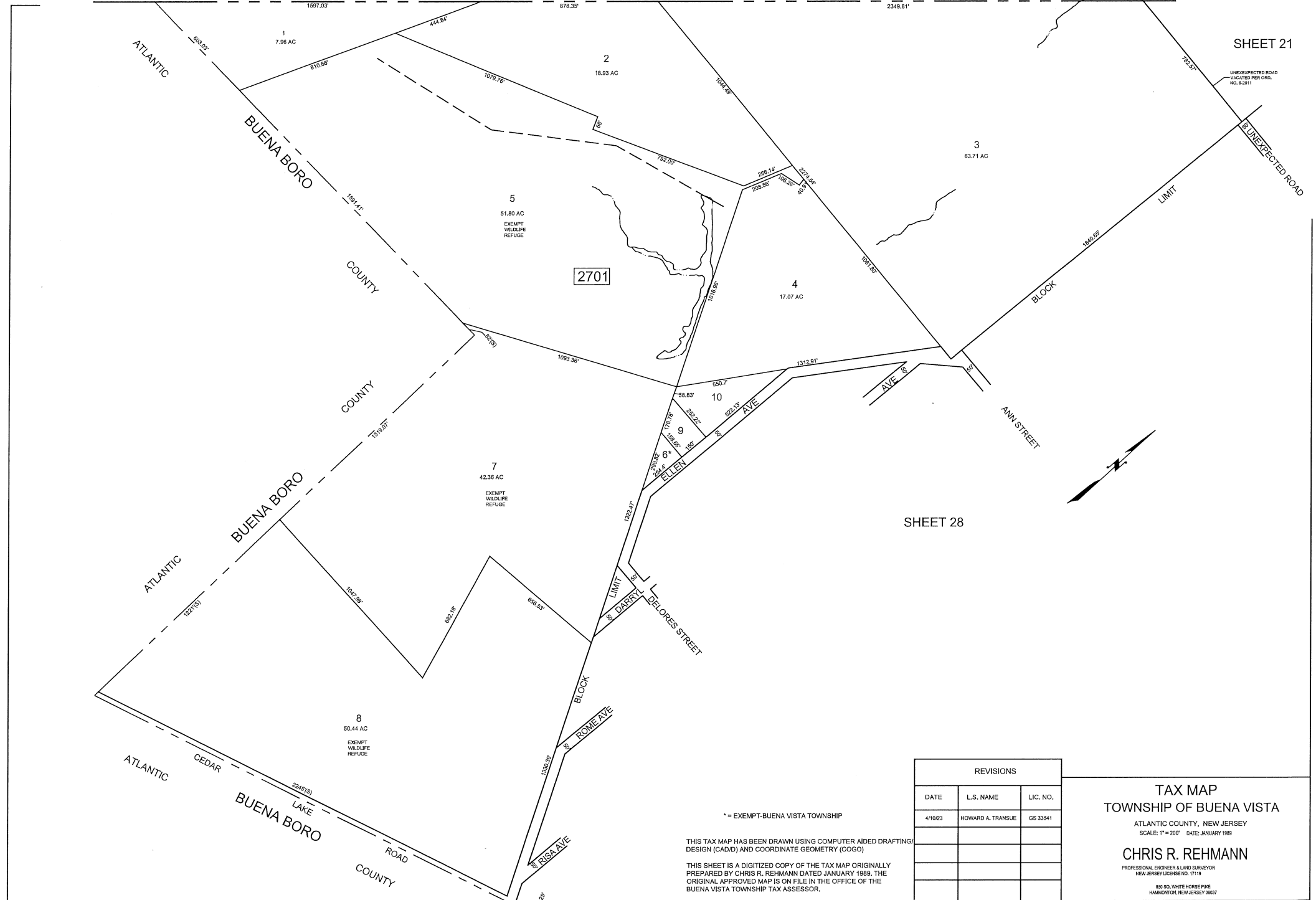
ATLANTIC COUNTY, NEW JERSEY
 SCALE: 1" = 200' DATE: JANUARY 1989

CHRIS R. REHMANN
 PROFESSIONAL ENGINEER & LAND SURVEYOR
 NEW JERSEY LICENSE NO. 17119

850 SO. WHITE HORSE PINE
 HAMMONTON, NEW JERSEY 08037

HAMILTON TOWNSHIP
ATLANTIC COUNTY

REVISED BY SSC-7-02
 REVISED BY CHURCHILL-OCT. '98, JAN. 1999



2701

SHEET 28

* = EXEMPT-BUENA VISTA TOWNSHIP

THIS TAX MAP HAS BEEN DRAWN USING COMPUTER AIDED DRAFTING/ DESIGN (CAD/D) AND COORDINATE GEOMETRY (COGO)

THIS SHEET IS A DIGITIZED COPY OF THE TAX MAP ORIGINALLY PREPARED BY CHRIS R. REHMANN DATED JANUARY 1989. THE ORIGINAL APPROVED MAP IS ON FILE IN THE OFFICE OF THE BUENA VISTA TOWNSHIP TAX ASSESSOR.

REVISIONS		
DATE	L.S. NAME	LIC. NO.
4/10/23	HOWARD A. TRANSUE	GS 33541

TAX MAP TOWNSHIP OF BUENA VISTA

ATLANTIC COUNTY, NEW JERSEY SCALE: 1" = 200' DATE: JANUARY 1989

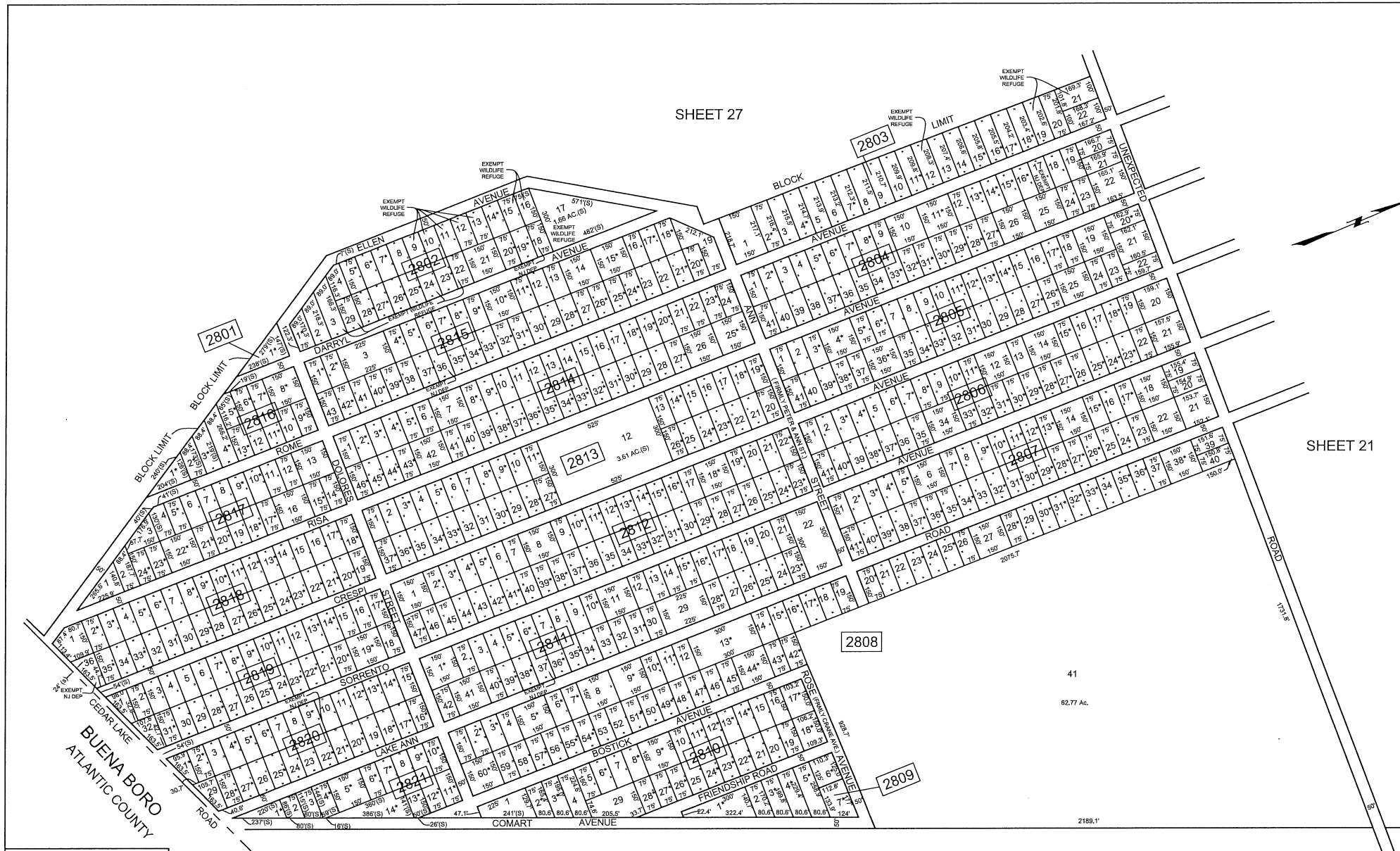
CHRIS R. REHMANN

PROFESSIONAL ENGINEER & LAND SURVEYOR NEW JERSEY LICENSE NO. 17119

830 RD. WHITE HORSE PIKE HANMONTON, NEW JERSEY 08037

SHEET 27

SHEET 21



REVISIONS		
DATE	L.S. NAME	LIC. NO.

REVISED BY CHURCHILL-OCT. '98

REVISED BY CHURCHILL - FEB. '98, OCT. '98, JAN. 1999

SHEET 29

* = EXEMPT-BUENA VISTA TOWNSHIP

THIS TAX MAP HAS BEEN DRAWN USING COMPUTER AIDED DRAFTING/ DESIGN (CAD/D) AND COORDINATE GEOMETRY (COGO).

THIS SHEET IS A DIGITIZED COPY OF THE TAX MAP ORIGINALLY PREPARED BY CHRIS R. REHMANN DATED JANUARY 1989. THE ORIGINAL APPROVED MAP IS ON FILE IN THE OFFICE OF THE BUENA VISTA TOWNSHIP TAX ASSESSOR.

TAX MAP
TOWNSHIP OF BUENA VISTA

ATLANTIC COUNTY, NEW JERSEY
SCALE: 1" = 200' DATE: JANUARY 1989

CHRIS R. REHMANN
PROFESSIONAL ENGINEER & LAND SURVEYOR
NEW JERSEY LICENSE NO. 17119

860 SO. WHITE HORSE PACE
HAWKINGTON, NEW JERSEY 08037

SHEET 23



REVISIONS		
DATE	L.S. NAME	LIC. NO.

* = EXEMPT-BUENA VISTA TOWNSHIP

THIS TAX MAP HAS BEEN DRAWN USING COMPUTER AIDED DRAFTING DESIGN (CADD) AND COORDINATE GEOMETRY (COGO)

THIS SHEET IS A DIGITIZED COPY OF THE TAX MAP ORIGINALLY PREPARED BY CHRIS R. REHMANN DATED JANUARY 1989. THE ORIGINAL APPROVED MAP IS ON FILE IN THE OFFICE OF THE BUENA VISTA TOWNSHIP TAX ASSESSOR.

TAX MAP
TOWNSHIP OF BUENA VISTA
 ATLANTIC COUNTY, NEW JERSEY
 SCALE: 1" = 200' DATE: JULY 1989

CHRIS R. REHMANN
 PROFESSIONAL ENGINEER & LAND SURVEYOR
 NEW JERSEY LICENSE NO. 17119

839 SO. WHITE HORSE PIKE
 HAMMONTON, NEW JERSEY 08037

2901

1
221.97 Ac.

1300

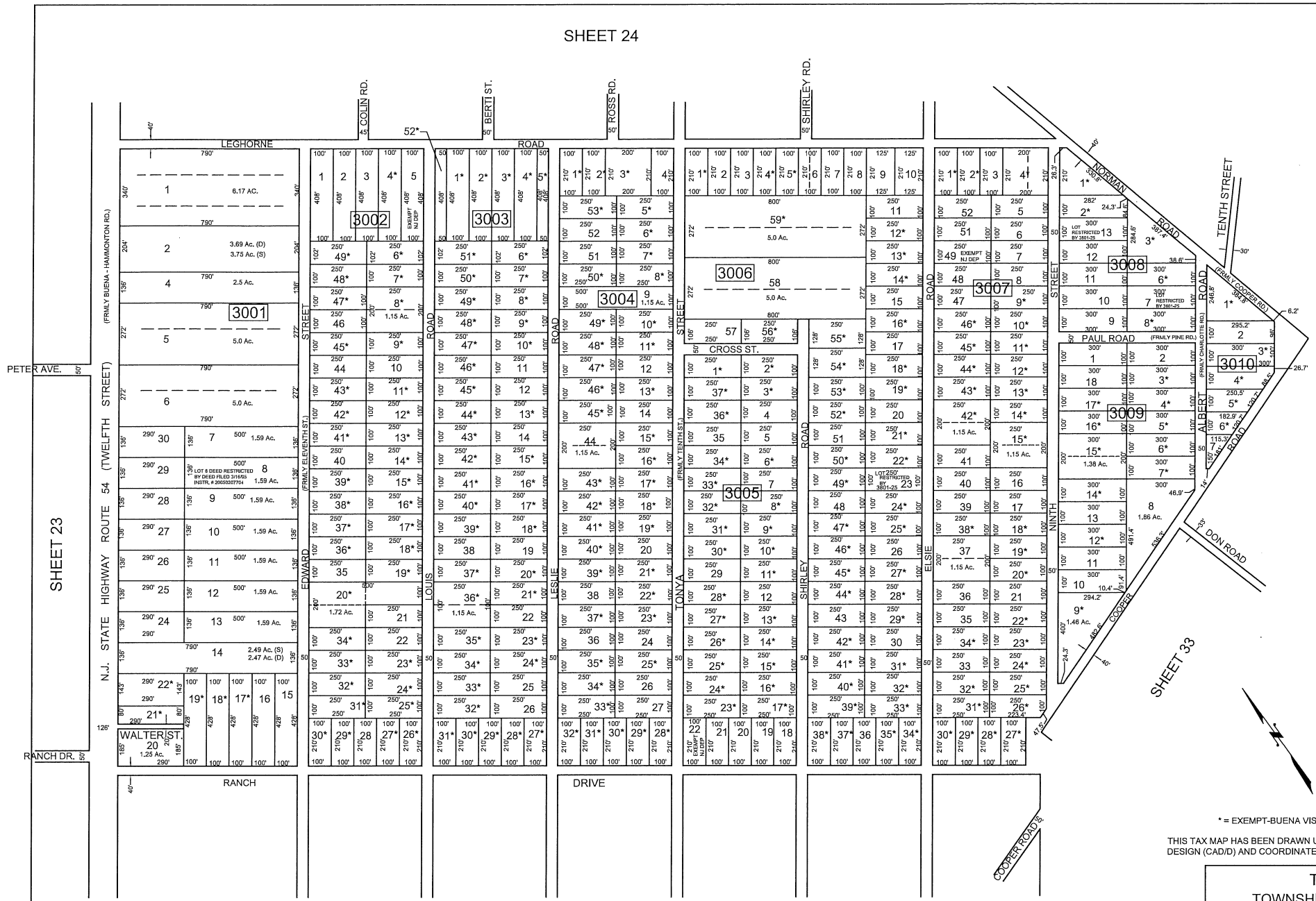
CLASS 1 SOUTHERN R.R. CO. OF N.J. (FORMERLY C.R.R. CO. OF N.J.) VINELAND BRANCH, MAIN LINE 4834'(S) 4965'(S) 3 5.88 AC.

SHEET 28

REVISED BY CHURCHILL-OCT. '98

SHEET 24

REVISIONS		
DATE	L.S. NAME	LIC. NO.



SHEET 23

SHEET 25

SHEET 33

SHEET 31

* = EXEMPT-BUENA VISTA TOWNSHIP
 THIS TAX MAP HAS BEEN DRAWN USING COMPUTER AIDED DRAFTING/
 DESIGN (CAD/D) AND COORDINATE GEOMETRY (COGO)

TAX MAP
TOWNSHIP OF BUENA VISTA

ATLANTIC COUNTY, NEW JERSEY
 SCALE: 1" = 200' DATE: JANUARY 1989

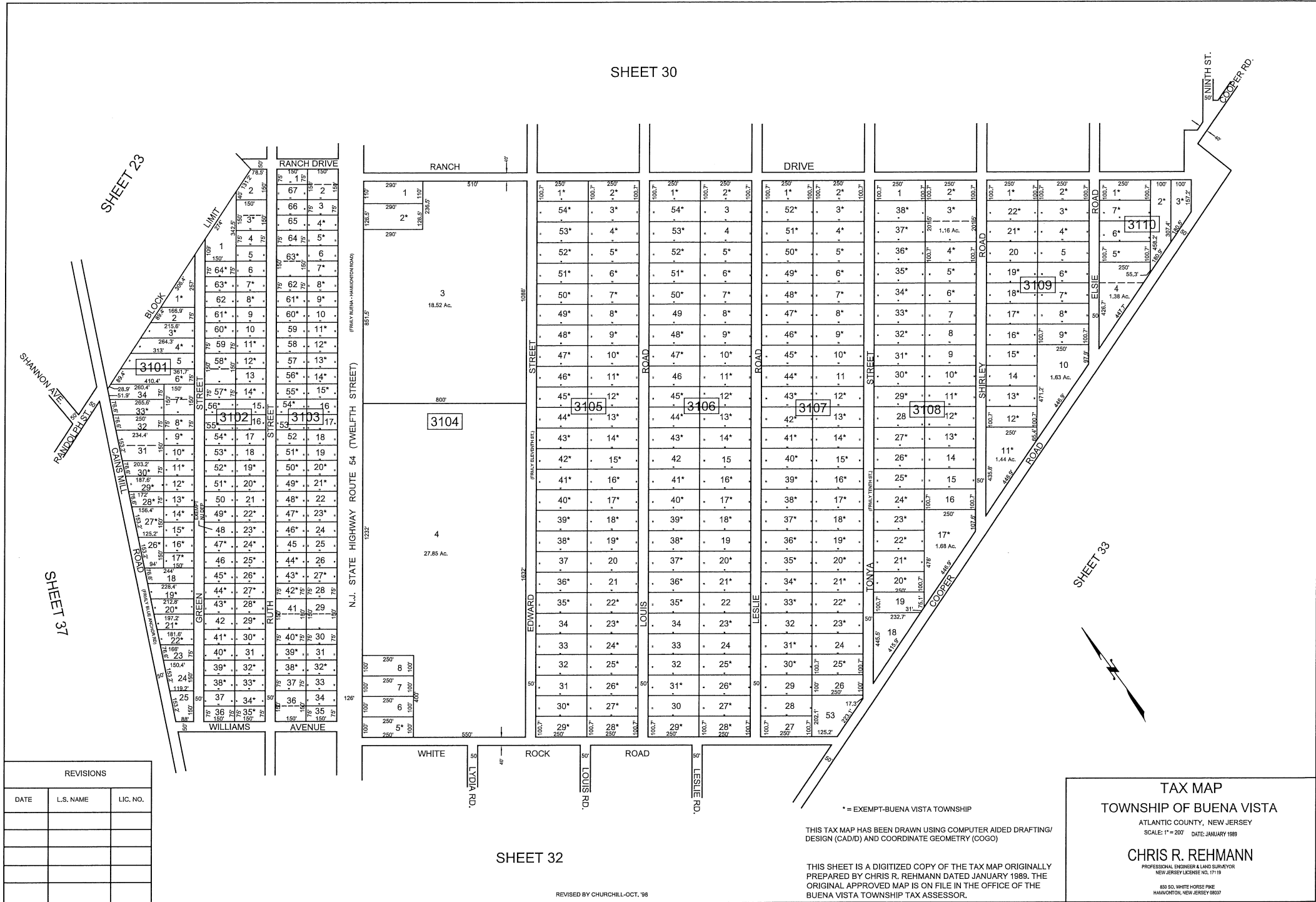
CHRIS R. REHMANN

PROFESSIONAL ENGINEER & LAND SURVEYOR
 NEW JERSEY LICENSE NO. 17119

830 S.O. WHITE HORSE FRIE
 HAMMONTON, NEW JERSEY 08037

THIS SHEET IS A DIGITIZED COPY OF THE TAX MAP ORIGINALLY
 PREPARED BY CHRIS R. REHMANN DATED JANUARY 1989. THE
 ORIGINAL APPROVED MAP IS ON FILE IN THE OFFICE OF THE
 BUENA VISTA TOWNSHIP TAX ASSESSOR.

SHEET 30



REVISIONS		
DATE	L.S. NAME	LIC. NO.

SHEET 32

REVISED BY CHURCHILL-OCT. '98

* = EXEMPT-BUENA VISTA TOWNSHIP

THIS TAX MAP HAS BEEN DRAWN USING COMPUTER AIDED DRAFTING/ DESIGN (CAD/D) AND COORDINATE GEOMETRY (COGO)

THIS SHEET IS A DIGITIZED COPY OF THE TAX MAP ORIGINALLY PREPARED BY CHRIS R. REHMANN DATED JANUARY 1989. THE ORIGINAL APPROVED MAP IS ON FILE IN THE OFFICE OF THE BUENA VISTA TOWNSHIP TAX ASSESSOR.

TAX MAP
TOWNSHIP OF BUENA VISTA
 ATLANTIC COUNTY, NEW JERSEY
 SCALE: 1" = 200' DATE: JANUARY 1989

CHRIS R. REHMANN
 PROFESSIONAL ENGINEER & LAND SURVEYOR
 NEW JERSEY LICENSE NO. 17119

830 SO. WHITE HORSE PIKE
 HAMMONTON, NEW JERSEY 08037



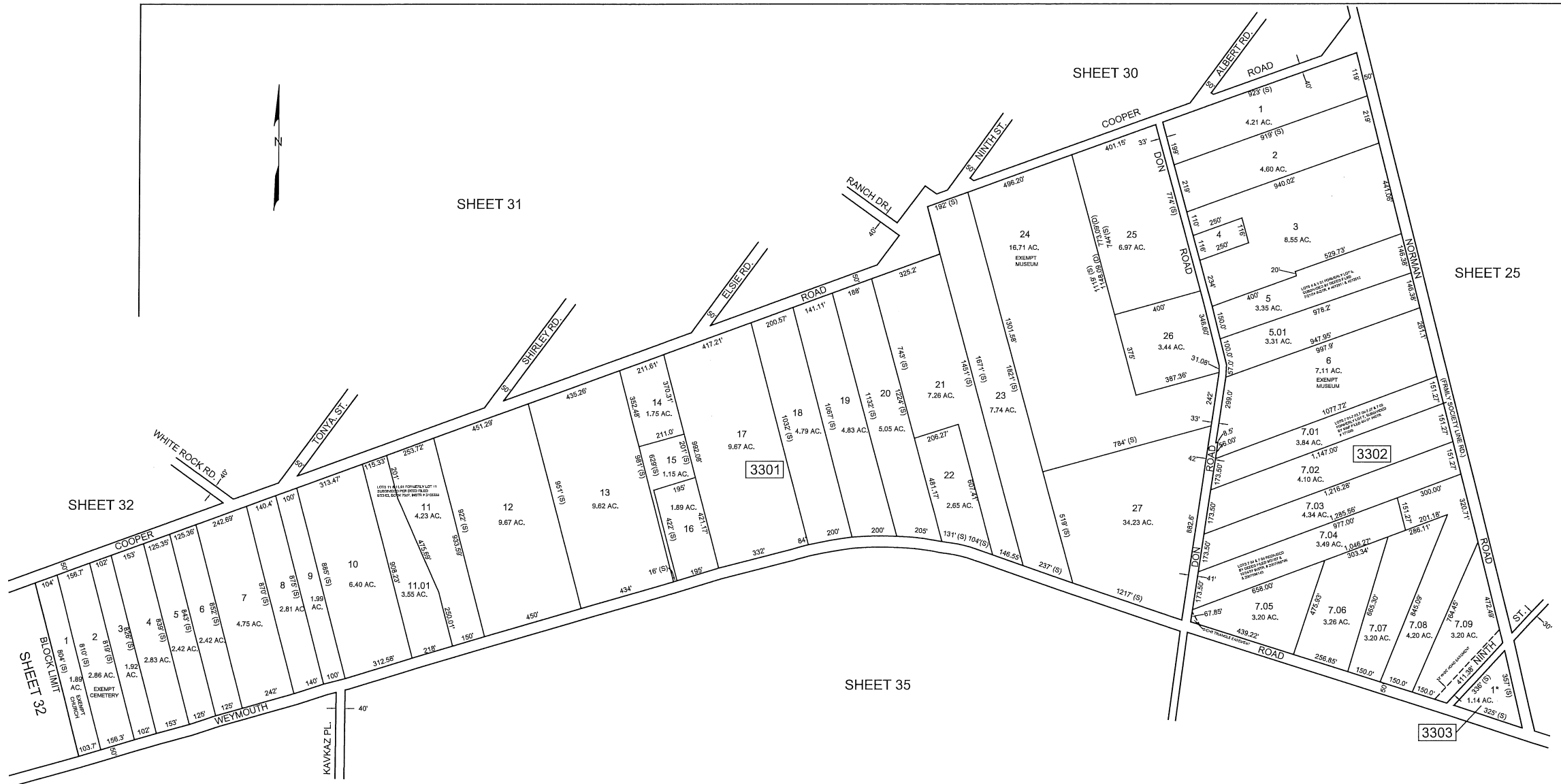
REVISIONS		
DATE	L.S. NAME	LIC. NO.
2/20/07	HOWARD A. TRANSUE	GS 33451
1/15/09	HOWARD A. TRANSUE	GS 33451



REV. SSSC 11-00, AUG. 2004
 REVISED BY CHURCHILL - JAN. 1999
 REVISED BY ALEXANDER M. CHURCHILL ASSOC. - FEB. '96, OCT. '98

* = EXEMPT-BUENA VISTA TOWNSHIP
 THIS TAX MAP HAS BEEN DRAWN USING COMPUTER AIDED DRAFTING/
 DESIGN (CAD/D) AND COORDINATE GEOMETRY (COGO)
 THIS SHEET IS A DIGITIZED COPY OF THE TAX MAP ORIGINALLY
 PREPARED BY CHRIS R. REHMANN DATED JANUARY 1989. THE
 ORIGINAL APPROVED MAP IS ON FILE IN THE OFFICE OF THE
 BUENA VISTA TOWNSHIP TAX ASSESSOR.

TAX MAP
TOWNSHIP OF BUENA VISTA
 ATLANTIC COUNTY, NEW JERSEY
 SCALE: 1" = 200' DATE: JANUARY 1989
CHRIS R. REHMANN
 PROFESSIONAL ENGINEER & LAND SURVEYOR
 NEW JERSEY LICENSE NO. 17119
 810 SO. WHITE HORSE PIKE
 HANMINGTON, NEW JERSEY 08037



REVISIONS		
DATE	L.S. NAME	LIC. NO.
2/20/07	HOWARD A. TRANSUE	GS 33451
1/15/09	HOWARD A. TRANSUE	GS 33451

REVISED BY SSCS - AUG. 2004
REVISED BY CHURCHILL - OCT. '98

* = EXEMPT-BUENA VISTA TOWNSHIP

THIS TAX MAP HAS BEEN DRAWN USING COMPUTER AIDED DRAFTING/ DESIGN (CAD/D) AND COORDINATE GEOMETRY (COGO)

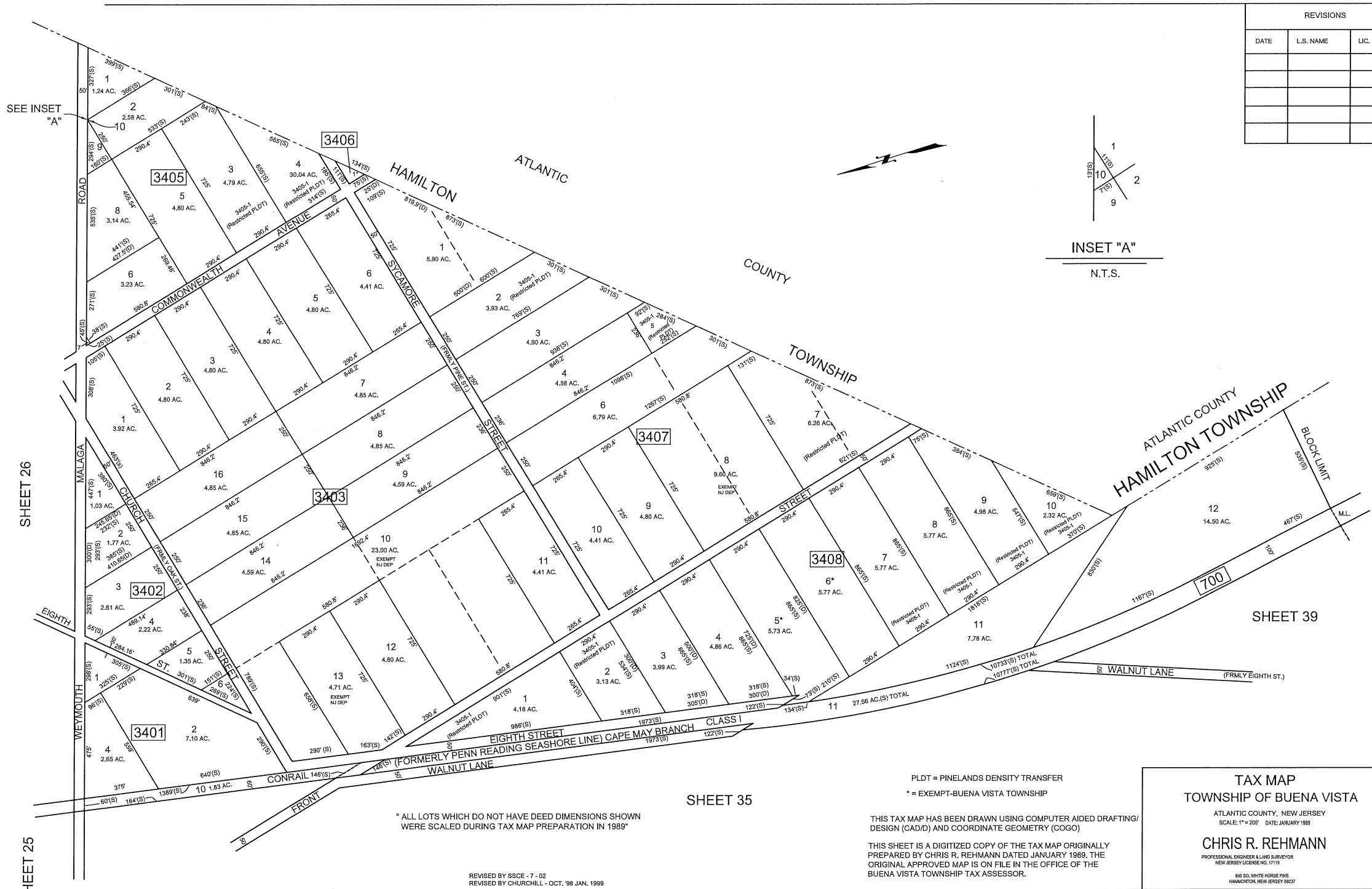
THIS SHEET IS A DIGITIZED COPY OF THE TAX MAP ORIGINALLY PREPARED BY CHRIS R. REHMANN DATED JANUARY 1989. THE ORIGINAL APPROVED MAP IS ON FILE IN THE OFFICE OF THE BUENA VISTA TOWNSHIP TAX ASSESSOR.

TAX MAP
TOWNSHIP OF BUENA VISTA
ATLANTIC COUNTY, NEW JERSEY
SCALE: 1" = 200' DATE: JANUARY 1989

CHRIS R. REHMANN
PROFESSIONAL ENGINEER & LAND SURVEYOR
NEW JERSEY LICENSE NO. 17119

810 SO. WHITE HORSE PIKE
HAMMONTON, NEW JERSEY 08027

REVISIONS		
DATE	L.S. NAME	LIC. NO.



" ALL LOTS WHICH DO NOT HAVE DEED DIMENSIONS SHOWN WERE SCALED DURING TAX MAP PREPARATION IN 1989"

REVISED BY SSCCE - 7 - 02
REVISED BY CHURCHILL - OCT. '98 JAN. 1999

PLDT = PINELANDS DENSITY TRANSFER
* = EXEMPT-BUENA VISTA TOWNSHIP

THIS TAX MAP HAS BEEN DRAWN USING COMPUTER AIDED DRAFTING/ DESIGN (CAD/D) AND COORDINATE GEOMETRY (COGO)

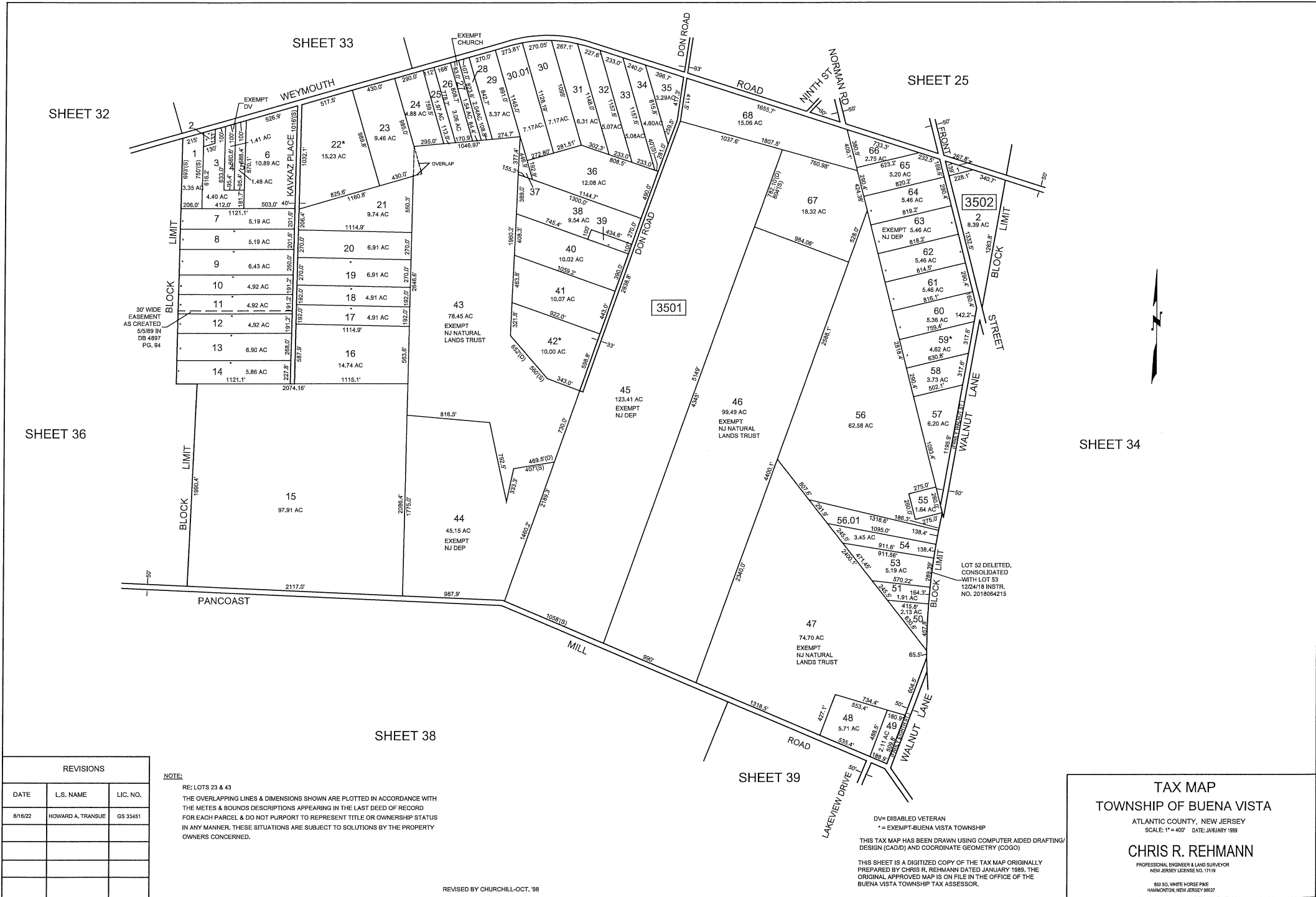
THIS SHEET IS A DIGITIZED COPY OF THE TAX MAP ORIGINALLY PREPARED BY CHRIS R. REHMANN DATED JANUARY 1989. THE ORIGINAL APPROVED MAP IS ON FILE IN THE OFFICE OF THE BUENA VISTA TOWNSHIP TAX ASSESSOR.

TAX MAP
TOWNSHIP OF BUENA VISTA

ATLANTIC COUNTY, NEW JERSEY
SCALE: 1" = 200' DATE: JANUARY 1989

CHRIS R. REHMANN
PROFESSIONAL ENGINEER & LAND SURVEYOR
NEW JERSEY LICENSE NO. 1719

835 SO. WHITE HORSE PKWY
HAMMONTON, NEW JERSEY 08237



SHEET 32

SHEET 33

SHEET 25

SHEET 36

SHEET 34

SHEET 38

SHEET 39

REVISIONS		
DATE	L.S. NAME	LIC. NO.
8/16/22	HOWARD A. TRANSUE	GS 33451

NOTE:
 RE: LOTS 23 & 43
 THE OVERLAPPING LINES & DIMENSIONS SHOWN ARE PLOTTED IN ACCORDANCE WITH THE METES & BOUNDS DESCRIPTIONS APPEARING IN THE LAST DEED OF RECORD FOR EACH PARCEL & DO NOT PURPORT TO REPRESENT TITLE OR OWNERSHIP STATUS IN ANY MANNER. THESE SITUATIONS ARE SUBJECT TO SOLUTIONS BY THE PROPERTY OWNERS CONCERNED.

REVISED BY CHURCHILL-OCT. '98

DV= DISABLED VETERAN
 * = EXEMPT-BUENA VISTA TOWNSHIP
 THIS TAX MAP HAS BEEN DRAWN USING COMPUTER AIDED DRAFTING/ DESIGN (CAD/D) AND COORDINATE GEOMETRY (COGO)
 THIS SHEET IS A DIGITIZED COPY OF THE TAX MAP ORIGINALLY PREPARED BY CHRIS R. REHMANN DATED JANUARY 1989. THE ORIGINAL APPROVED MAP IS ON FILE IN THE OFFICE OF THE BUENA VISTA TOWNSHIP TAX ASSESSOR.

TAX MAP
TOWNSHIP OF BUENA VISTA
 ATLANTIC COUNTY, NEW JERSEY
 SCALE: 1" = 400'
 DATE: JANUARY 1989
CHRIS R. REHMANN
 PROFESSIONAL ENGINEER & LAND SURVEYOR
 NEW JERSEY LICENSE NO. 1119
 830 G.S. AVENUE, FORDS PARK
 HAMMONTON, NEW JERSEY 08037



SHEET 38

SHEET 35

ALL LOTS WHICH DO NOT HAVE DEED DIMENSIONS SHOWN WERE SCALED DURING TAX MAP PREPARATION IN 1989

DV= DISABLED VETERAN
 * = EXEMPT-BUENA VISTA TOWNSHIP
 THIS TAX MAP HAS BEEN DRAWN USING COMPUTER AIDED DRAFTING/
 DESIGN (CAD/D) AND COORDINATE GEOMETRY (COGO)

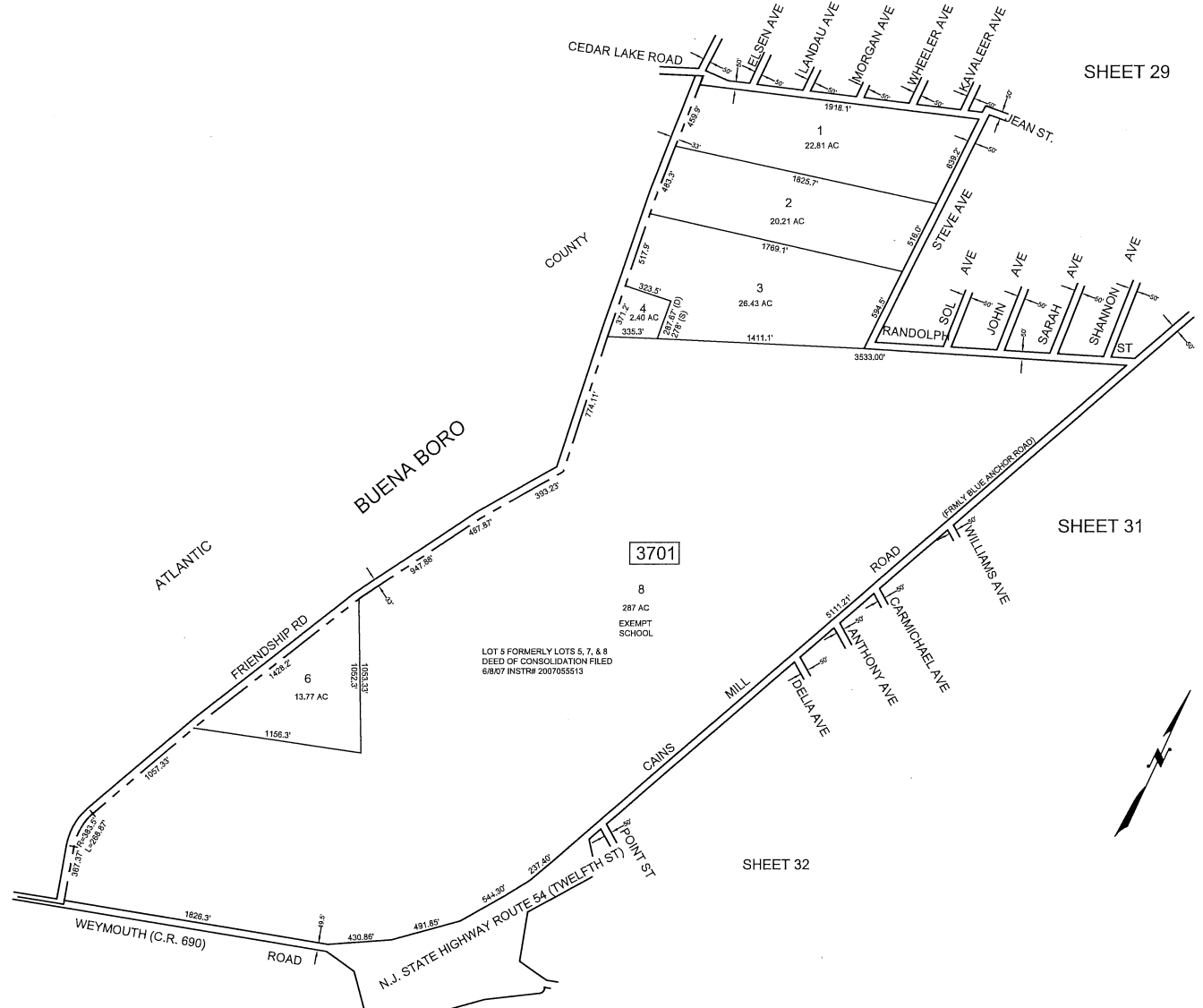
REVISIONS		
DATE	L.S. NAME	LIC. NO.
2/2007	HOWARD A. TRANSUE	GS 33451

TAX MAP
TOWNSHIP OF BUENA VISTA
 ATLANTIC COUNTY, NEW JERSEY
 SCALE: 1" = 200' DATE: JANUARY 1989
CHRIS R. REHMANN
 PROFESSIONAL ENGINEER & LAND SURVEYOR
 NEW JERSEY LICENSE NO. 17118

THIS SHEET IS A DIGITIZED COPY OF THE TAX MAP ORIGINALLY PREPARED BY CHRIS R. REHMANN DATED JANUARY 1989. THE ORIGINAL APPROVED MAP IS ON FILE IN THE OFFICE OF THE BUENA VISTA TOWNSHIP TAX ASSESSOR.

REVISED BY SSCE - 7-02, AUG. 2004
 REVISED BY ALEXANDER M. CHURCHILL ASSOC. - JUNE'95', OCT. '98

REVISED 9-9-93
 REV. 1-6-95



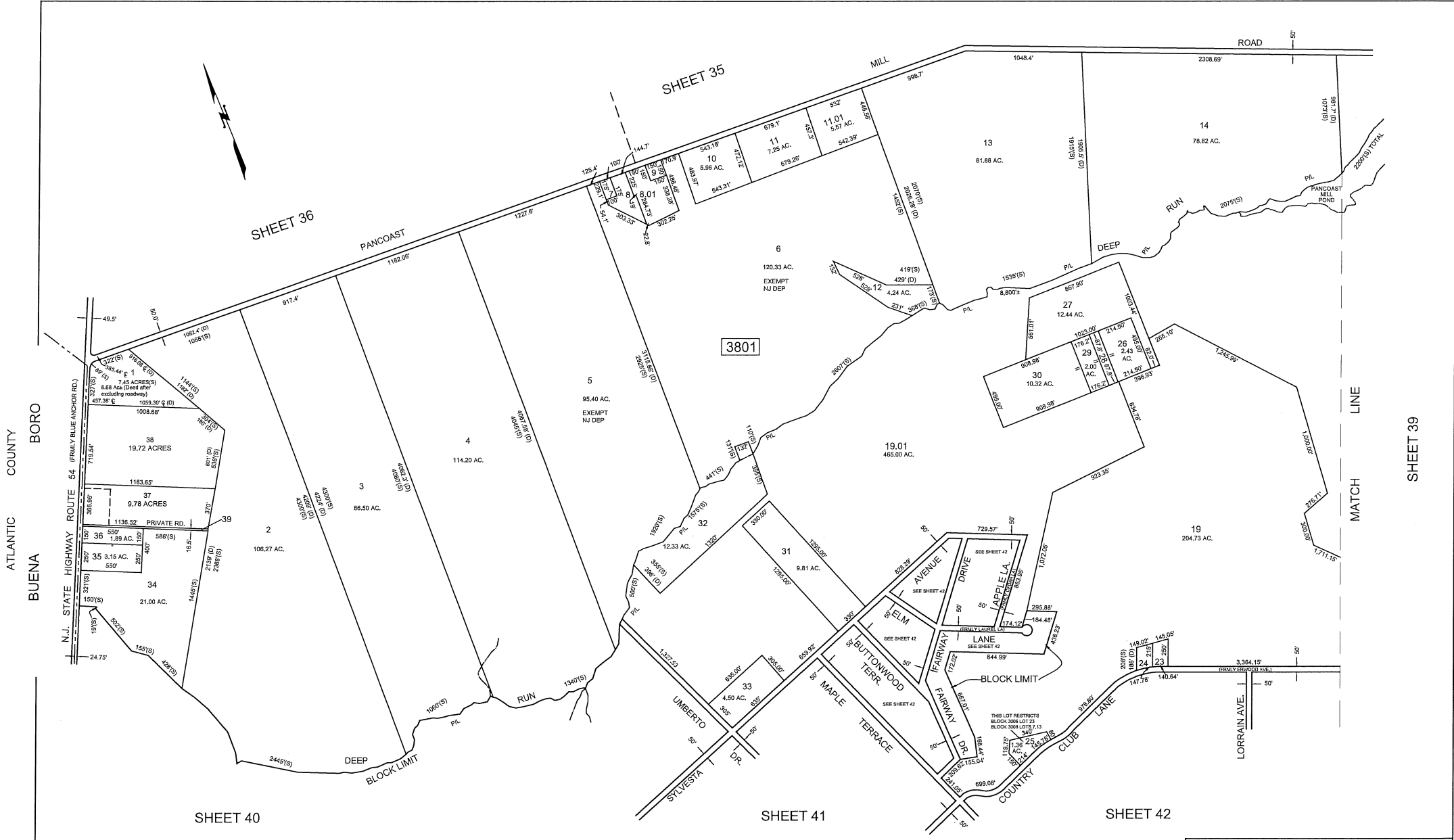
REVISIONS		
DATE	L.S. NAME	LIC. NO.
1/15/09	HOWARD A. TRANSUE	GS 33451

REVISED BY CHURCHILL - OCT '98

* = EXEMPT-BUENA VISTA TOWNSHIP
 THIS TAX MAP HAS BEEN DRAWN USING COMPUTER AIDED DRAFTING/ DESIGN (CAD/D) AND COORDINATE GEOMETRY (COGO)
 THIS SHEET IS A DIGITIZED COPY OF THE TAX MAP ORIGINALLY PREPARED BY CHRIS R. REHMANN DATED JANUARY 1989. THE ORIGINAL APPROVED MAP IS ON FILE IN THE OFFICE OF THE BUENA VISTA TOWNSHIP TAX ASSESSOR.

TAX MAP
TOWNSHIP OF BUENA VISTA
 ATLANTIC COUNTY, NEW JERSEY
 SCALE: 1" = 400' DATE: JANUARY 1989
CHRIS R. REHMANN
 PROFESSIONAL ENGINEER & LAND SURVEYOR
 NEW JERSEY LICENSE NO. 17119
882 E.D. WHITE HORSE PIKE
 HAMMONTON, NEW JERSEY 08037

REV 1-6-95



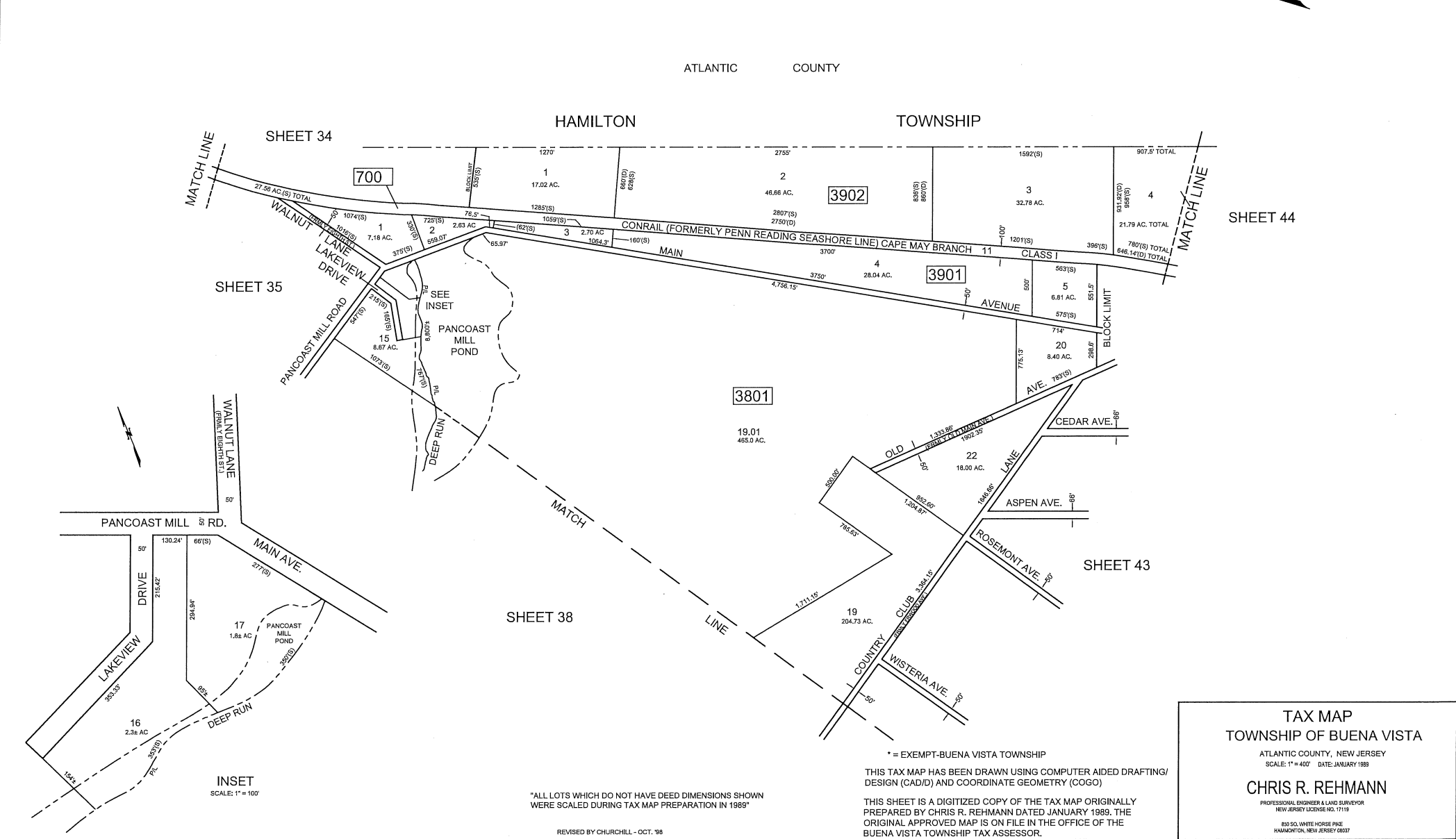
REVISIONS		
DATE	L.S. NAME	LIC. NO.
22007	HONORABLE TRANSLAT	CE 33451
01802	HONORABLE TRANSLAT	CE 33451

REVISED BY SSCCE - 7 - 02
 REVISED BY CHURCHILL - JAN. 1999
 REVISED BY ALEXANDER M. CHURCHILL ASSOC. - SEPT. '95 FEB. '96, OCT. '98

* = EXEMPT-BUENA VISTA TOWNSHIP
 THIS TAX MAP HAS BEEN DRAWN USING COMPUTER AIDED DRAFTING/DESIGN (CAD/D) AND COORDINATE GEOMETRY (COGO)
 THIS SHEET IS A DIGITIZED COPY OF THE TAX MAP ORIGINALLY PREPARED BY CHRIS R. REHMANN DATED JANUARY 1989. THE ORIGINAL APPROVED MAP IS ON FILE IN THE OFFICE OF THE BUENA VISTA TOWNSHIP TAX ASSESSOR.

TAX MAP
TOWNSHIP OF BUENA VISTA
 ATLANTIC COUNTY, NEW JERSEY
 SCALE: 1" = 400' DATE: JANUARY 1989
CHRIS R. REHMANN
 PROFESSIONAL ENGINEER & LAND SURVEYOR
 NEW JERSEY LICENSE NO. 17119
 830 SO. WHITE HORSE BRIDGE
 HANMINGTON, NEW JERSEY 08037

REVISIONS		
DATE	L.S. NAME	LIC. NO.
8/18/22	HOWARD A. TRANSUE	GS 33451



ATLANTIC COUNTY

HAMILTON TOWNSHIP

SHEET 34

SHEET 44

SHEET 35

SHEET 43

SHEET 38

INSET
SCALE: 1" = 100'

"ALL LOTS WHICH DO NOT HAVE DEED DIMENSIONS SHOWN WERE SCALED DURING TAX MAP PREPARATION IN 1989"

REVISED BY CHURCHILL - OCT. '98

* = EXEMPT-BUENA VISTA TOWNSHIP

THIS TAX MAP HAS BEEN DRAWN USING COMPUTER AIDED DRAFTING/ DESIGN (CAD/D) AND COORDINATE GEOMETRY (COGO)

THIS SHEET IS A DIGITIZED COPY OF THE TAX MAP ORIGINALLY PREPARED BY CHRIS R. REHMANN DATED JANUARY 1989. THE ORIGINAL APPROVED MAP IS ON FILE IN THE OFFICE OF THE BUENA VISTA TOWNSHIP TAX ASSESSOR.

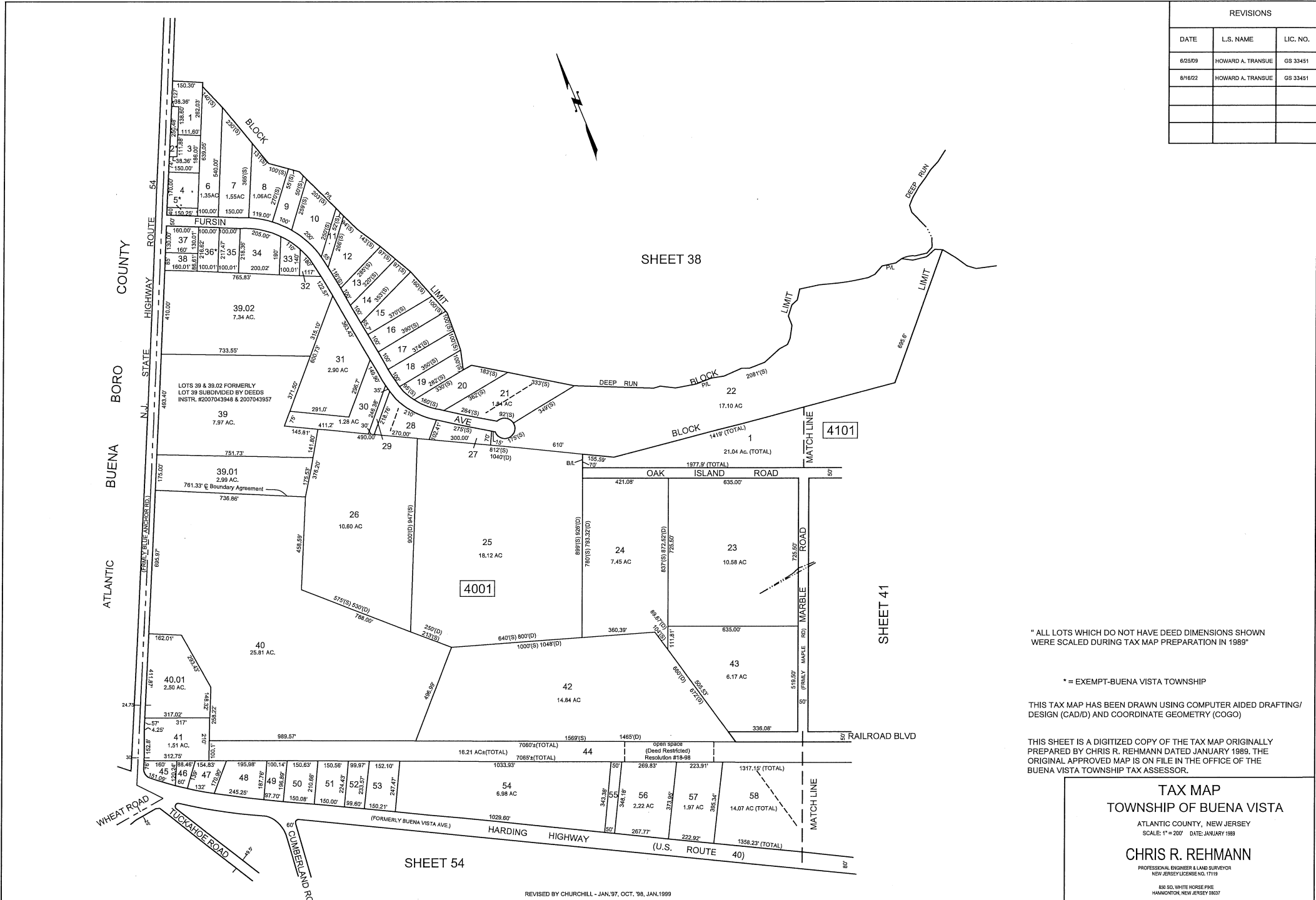
TAX MAP
TOWNSHIP OF BUENA VISTA

ATLANTIC COUNTY, NEW JERSEY
SCALE: 1" = 400' DATE: JANUARY 1989

CHRIS R. REHMANN

PROFESSIONAL ENGINEER & LAND SURVEYOR
NEW JERSEY LICENSE NO. 17119

835 SO. WHITE HORSE PIKE
HAMMONTON, NEW JERSEY 08037



" ALL LOTS WHICH DO NOT HAVE DEED DIMENSIONS SHOWN WERE SCALED DURING TAX MAP PREPARATION IN 1989"

* = EXEMPT-BUENA VISTA TOWNSHIP

THIS TAX MAP HAS BEEN DRAWN USING COMPUTER AIDED DRAFTING/ DESIGN (CAD/D) AND COORDINATE GEOMETRY (COGO)

THIS SHEET IS A DIGITIZED COPY OF THE TAX MAP ORIGINALLY PREPARED BY CHRIS R. REHMANN DATED JANUARY 1989. THE ORIGINAL APPROVED MAP IS ON FILE IN THE OFFICE OF THE BUENA VISTA TOWNSHIP TAX ASSESSOR.

TAX MAP
TOWNSHIP OF BUENA VISTA
 ATLANTIC COUNTY, NEW JERSEY
 SCALE: 1" = 200' DATE: JANUARY 1989
CHRIS R. REHMANN
 PROFESSIONAL ENGINEER & LAND SURVEYOR
 NEW JERSEY LICENSE NO. 1719
 808 SO. WHITE HORSE PIKE
 HANMINGTON, NEW JERSEY 08037